

Legend

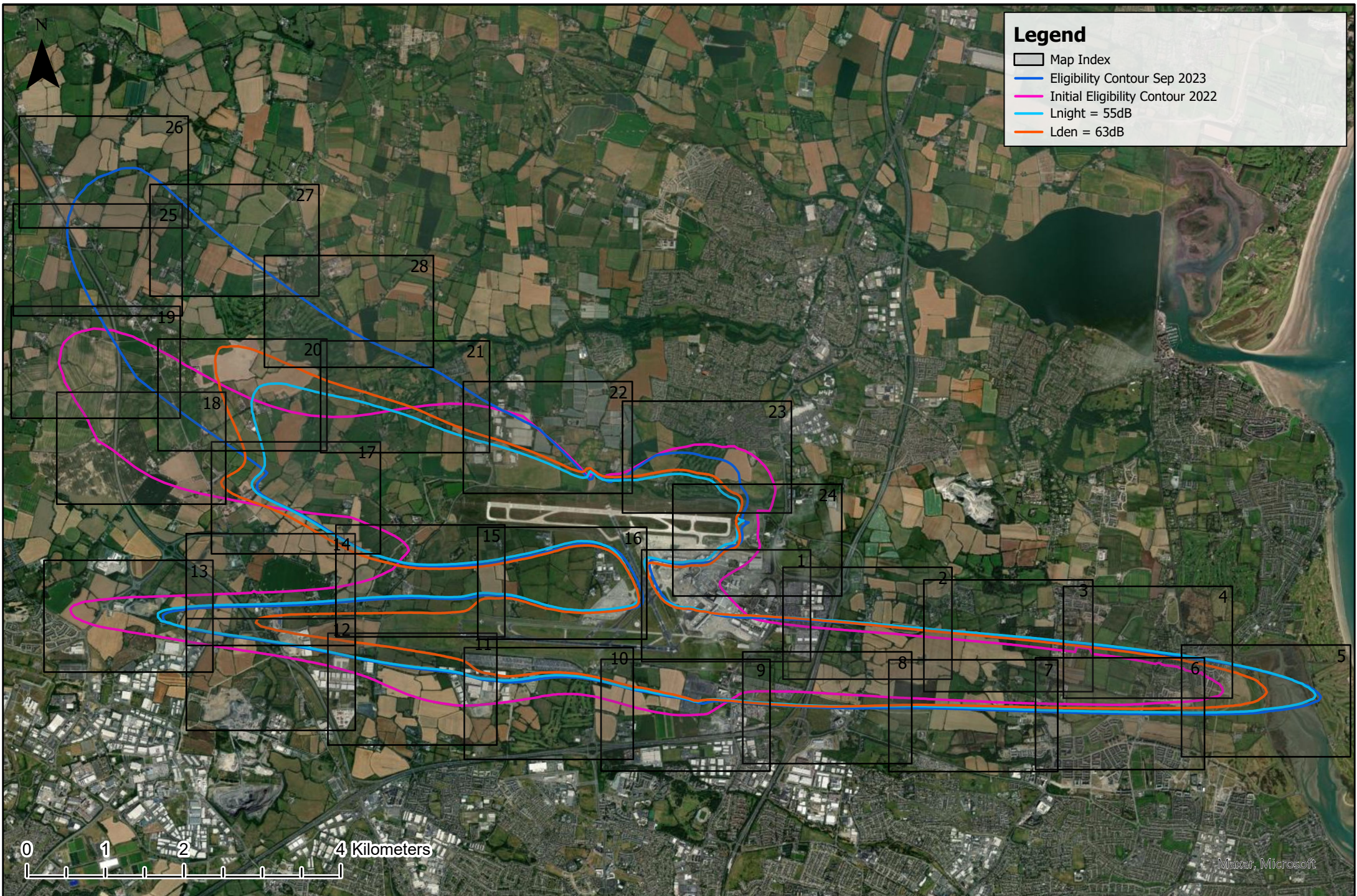
- Eligibility Contour Sep 2023
- Initial Eligibility Contour 2022
- Lnight = 55dB
- Lden = 63dB

0 1 2 4 Kilometers

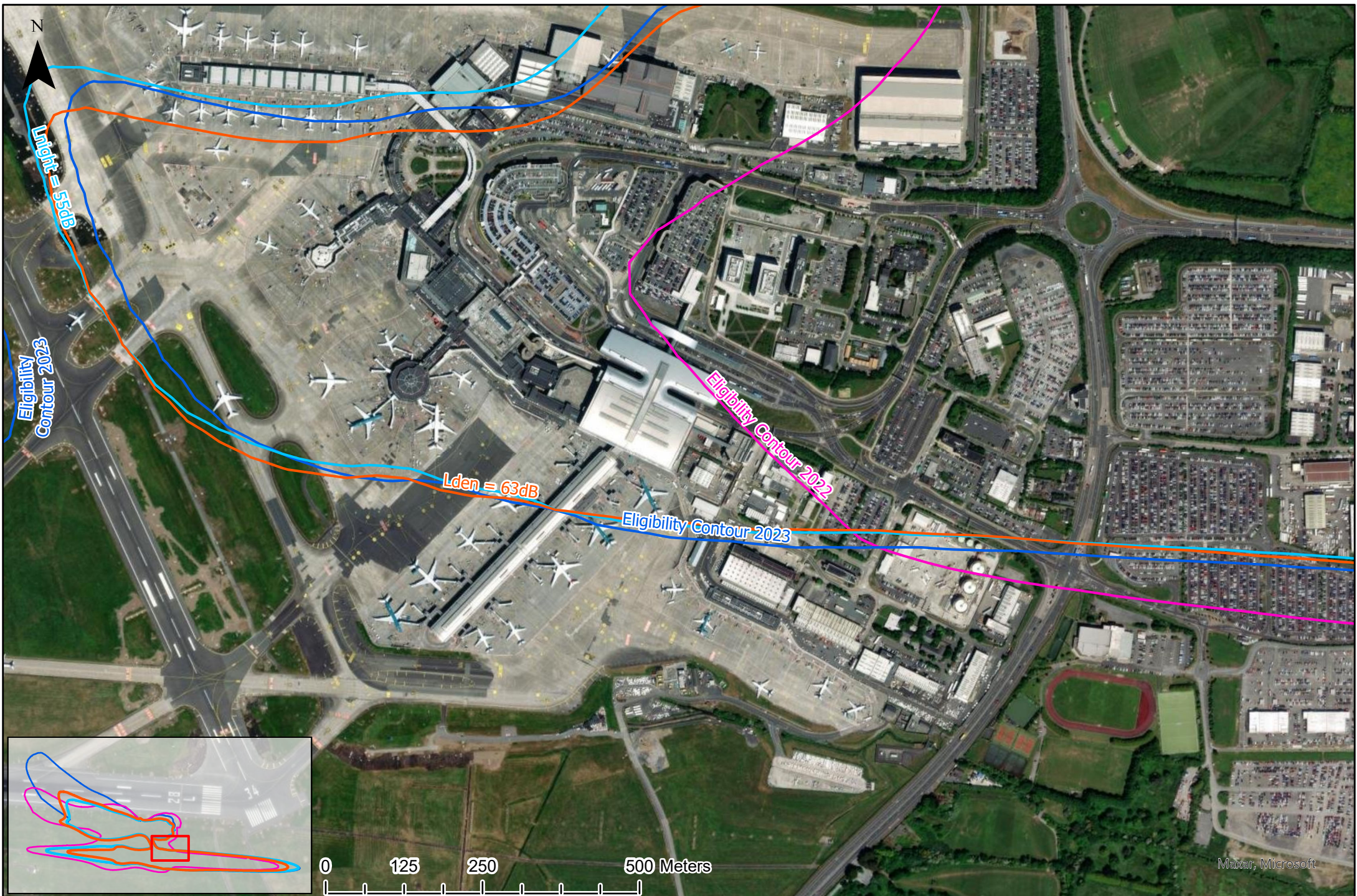
Comparison between Regulatory Decision 3rd Condition and F.I. Response
Including 55dB (Lnight) and 63 dB (Lden) contours



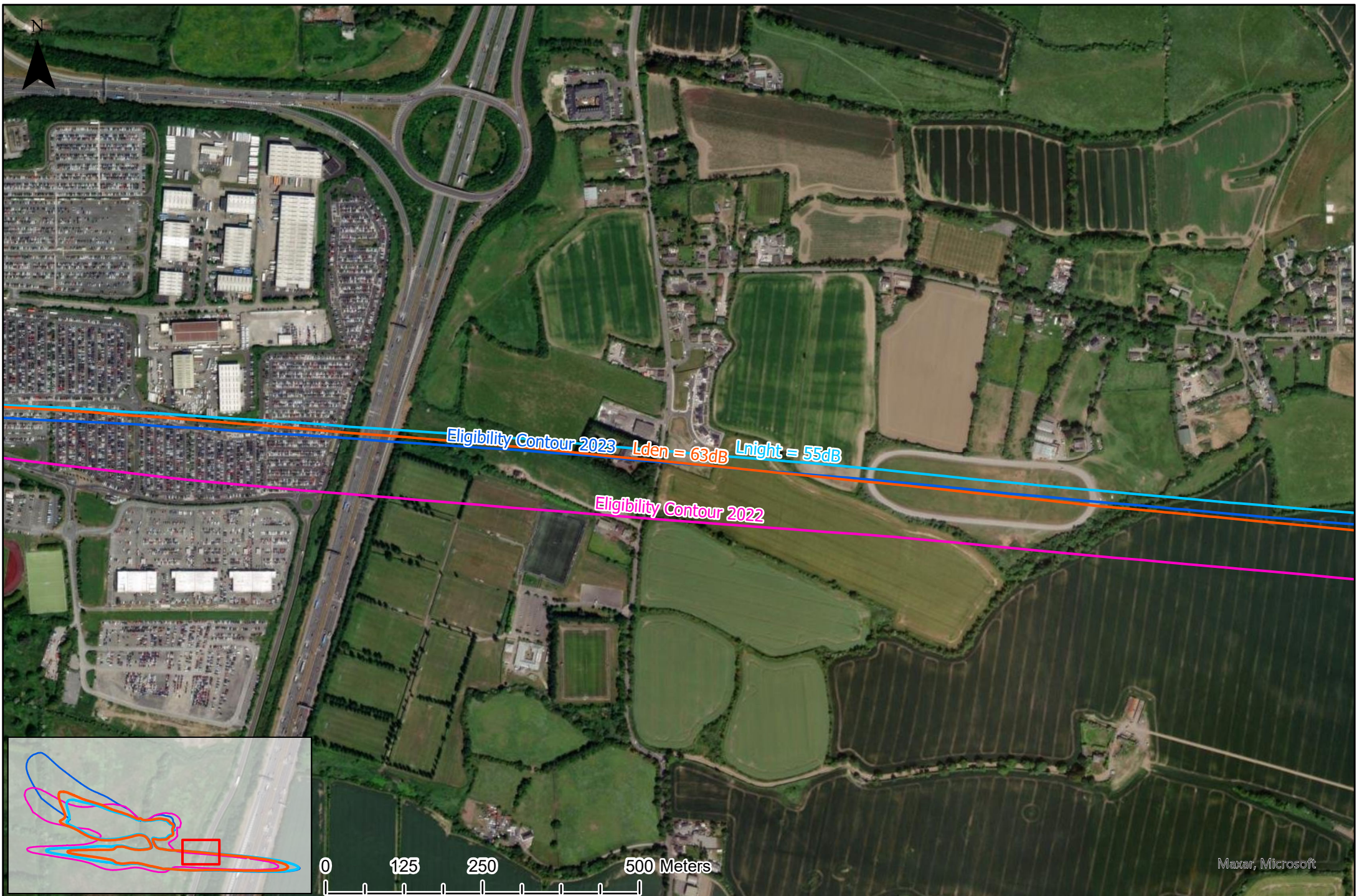
Overview Map



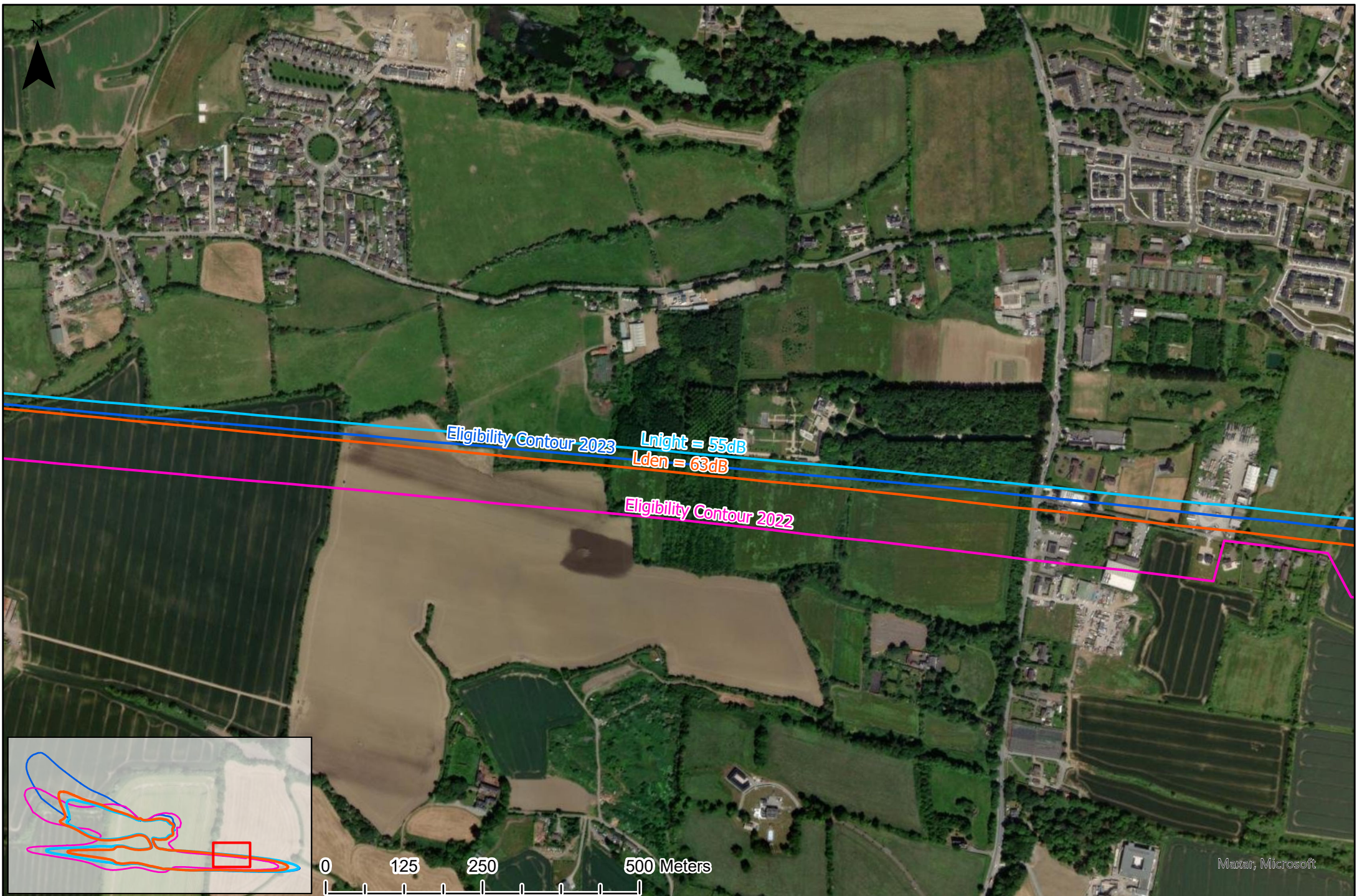
Comparison between Regulatory Decision 3rd Condition and F.I. Response
Including 55dB (Lnight) and 63 dB (Lden) contours



Comparison between Regulatory Decision 3rd Condition and F.I. Response
Including 55dB (Lnight) and 63 dB (Lden) contours



Comparison between Regulatory Decision 3rd Condition and F.I. Response
Including 55dB (Lnight) and 63 dB (Lden) contours



Comparison between Regulatory Decision 3rd Condition and F.I. Response
Including 55dB (Lnight) and 63 dB (Lden) contours



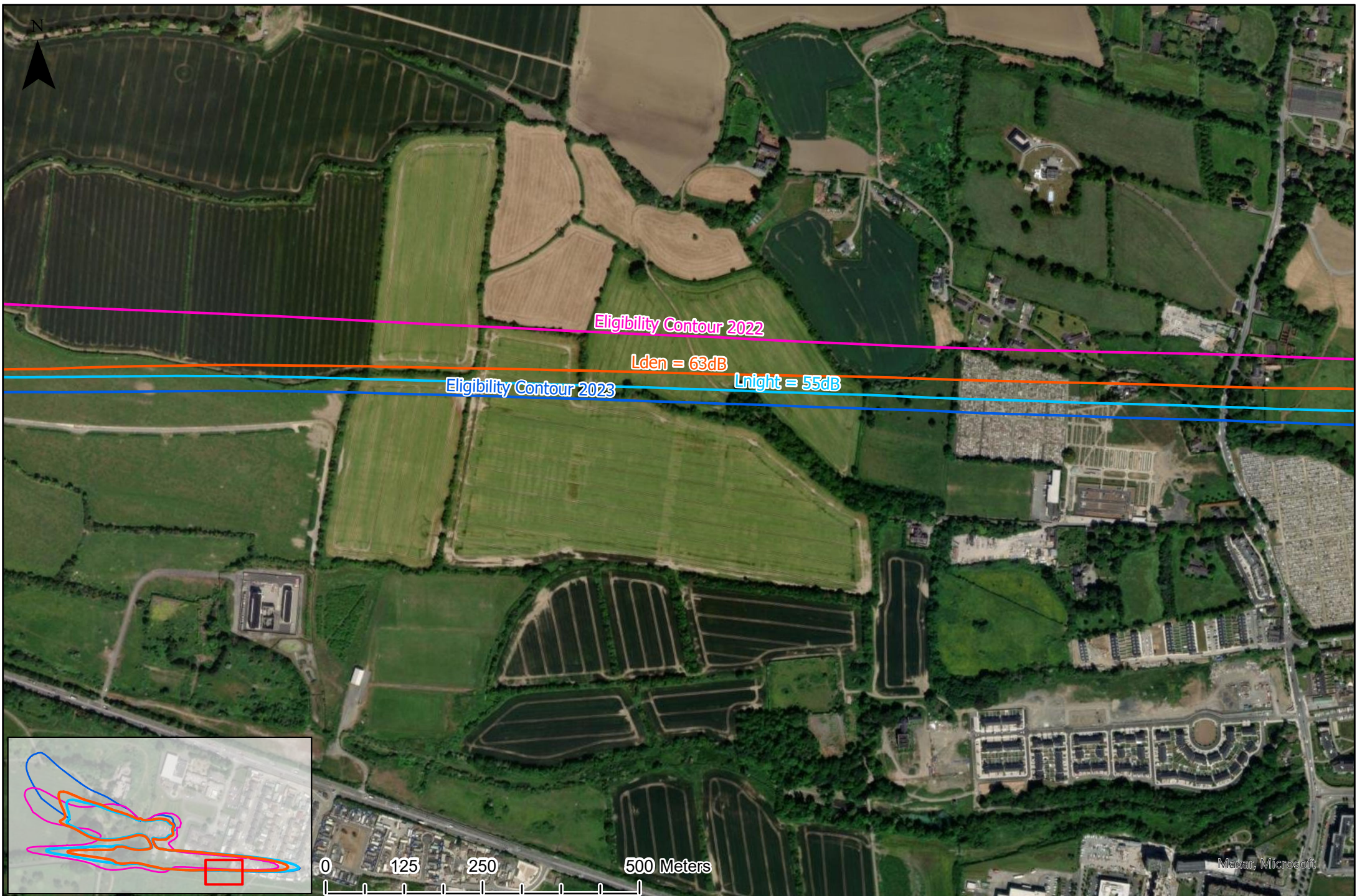
Comparison between Regulatory Decision 3rd Condition and F.I. Response
Including 55dB (Lnight) and 63 dB (Lden) contours



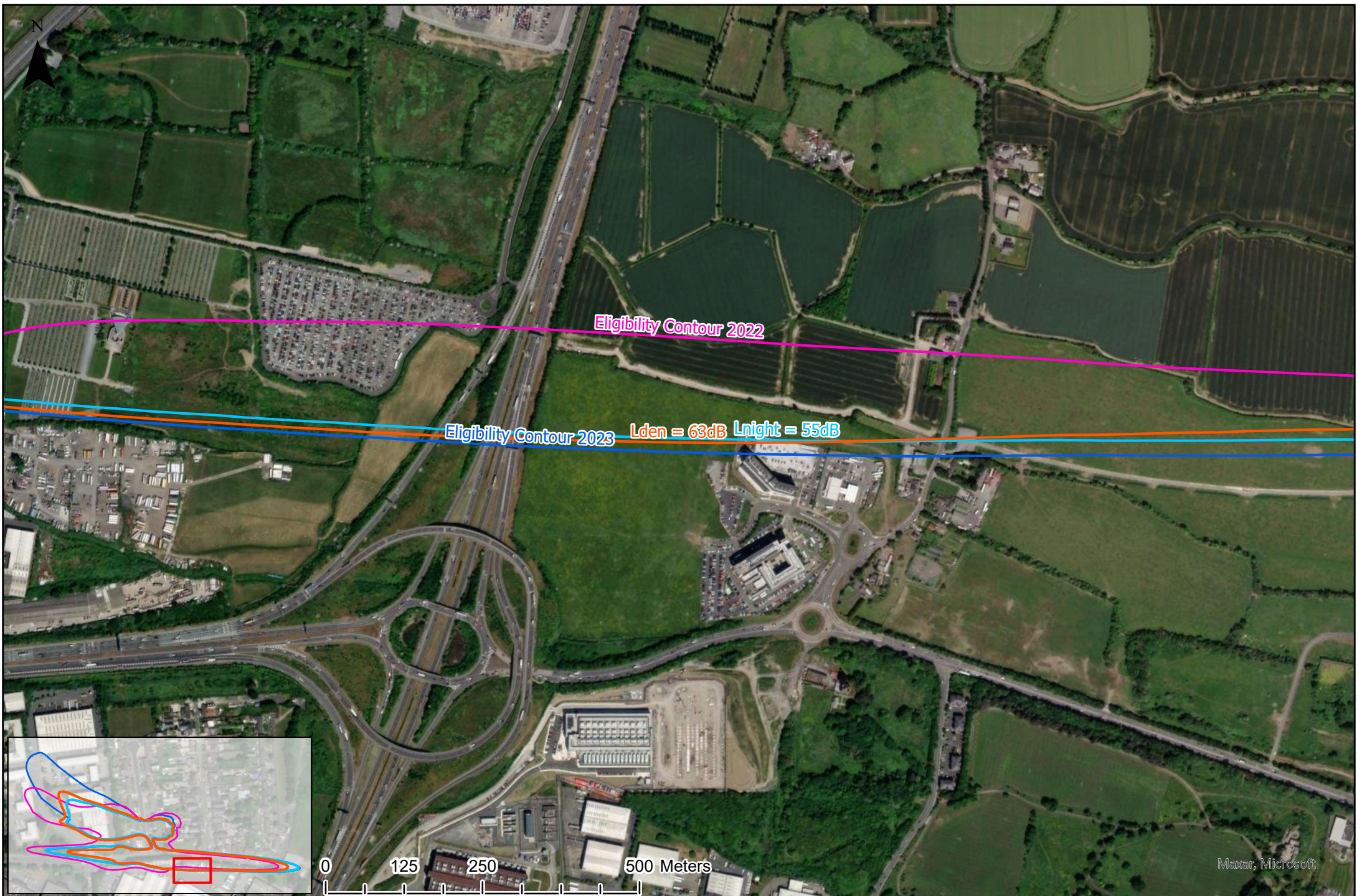
Comparison between Regulatory Decision 3rd Condition and F.I. Response
Including 55dB (Lnight) and 63 dB (Lden) contours



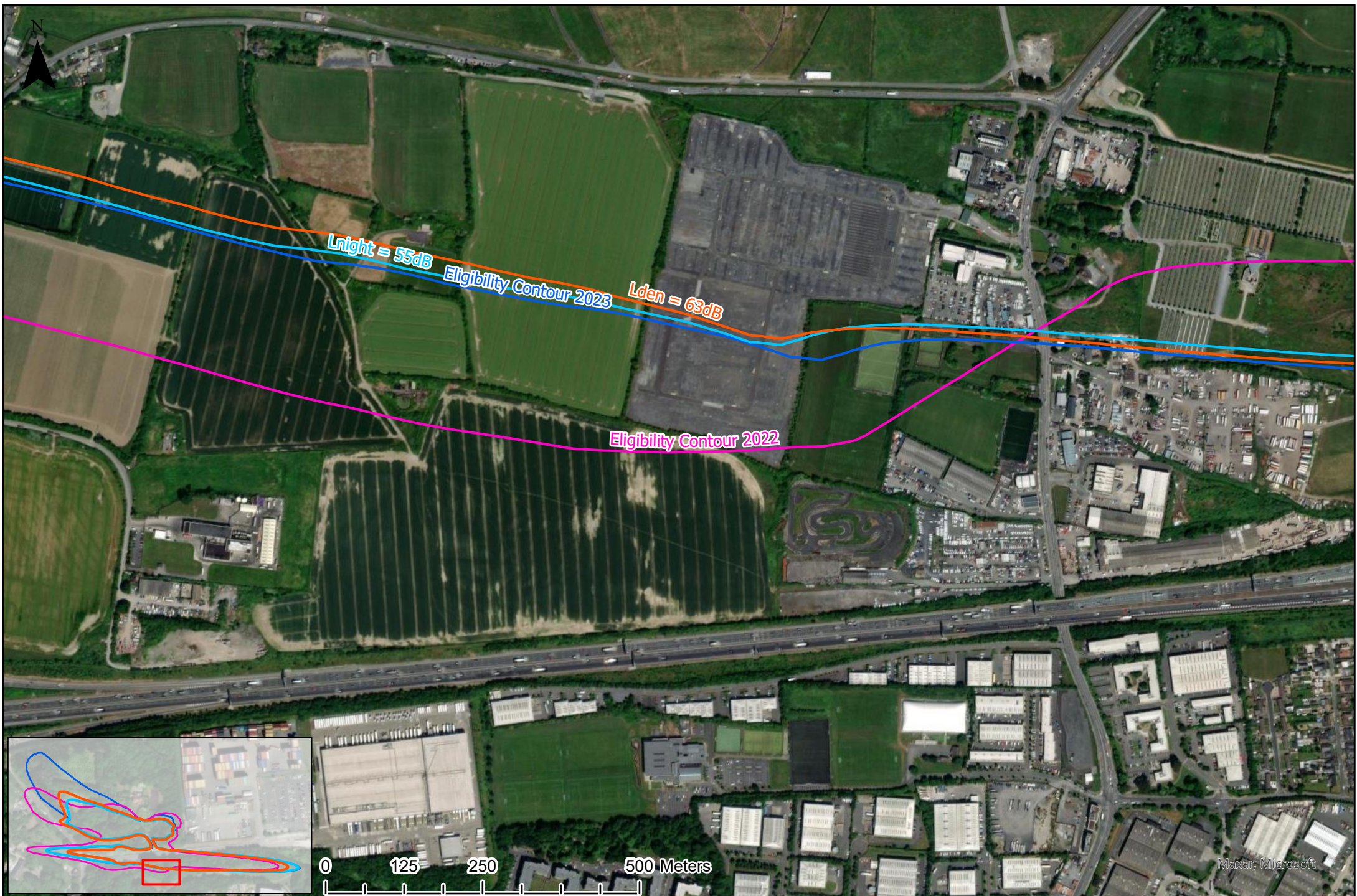
Comparison between Regulatory Decision 3rd Condition and F.I. Response
Including 55dB (Lnight) and 63 dB (Lden) contours



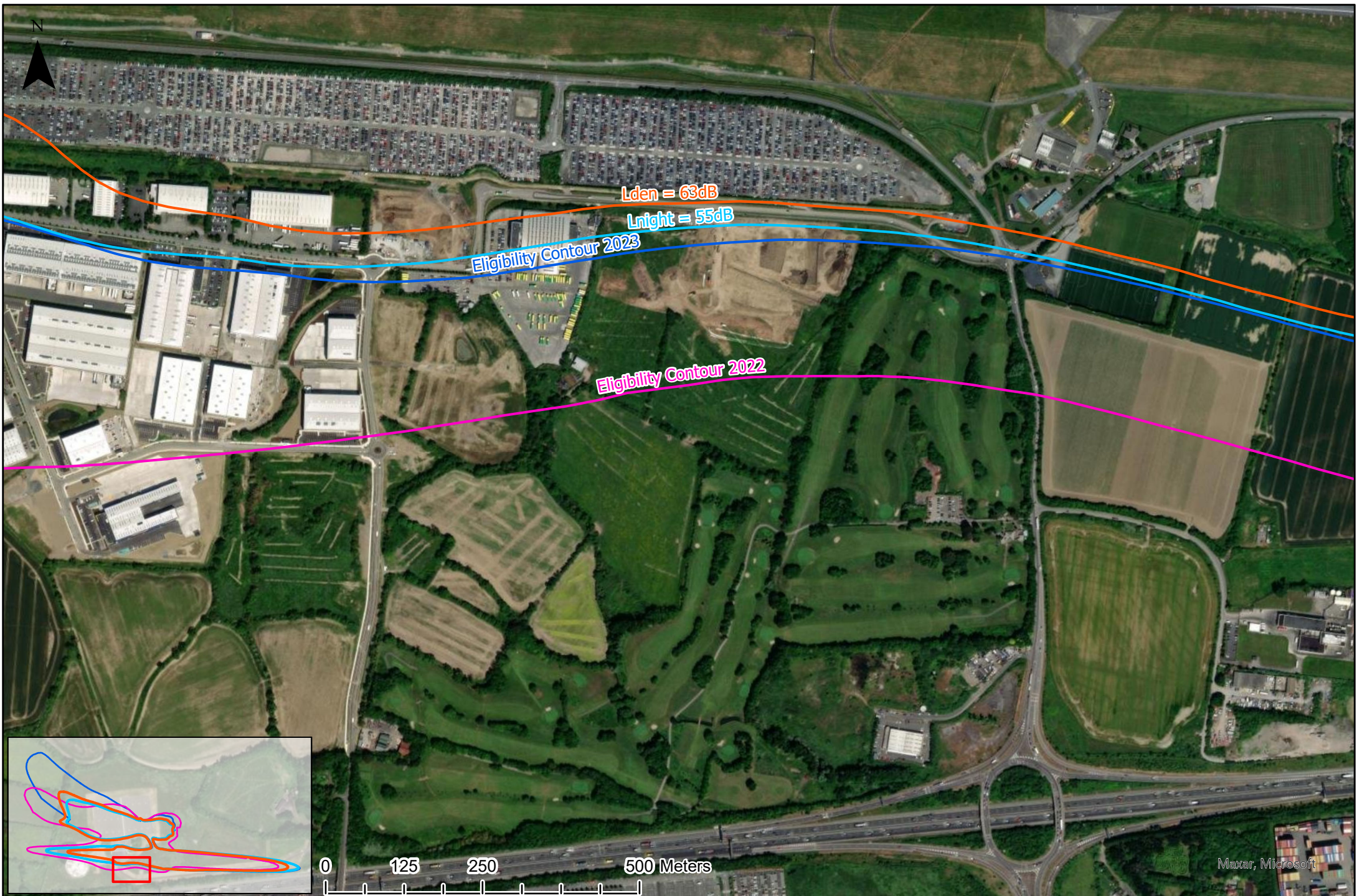
Comparison between Regulatory Decision 3rd Condition and F.I. Response
Including 55dB (Lnight) and 63 dB (Lden) contours



Comparison between Regulatory Decision 3rd Condition and F.I. Response
Including 55dB (Lnight) and 63 dB (Lden) contours



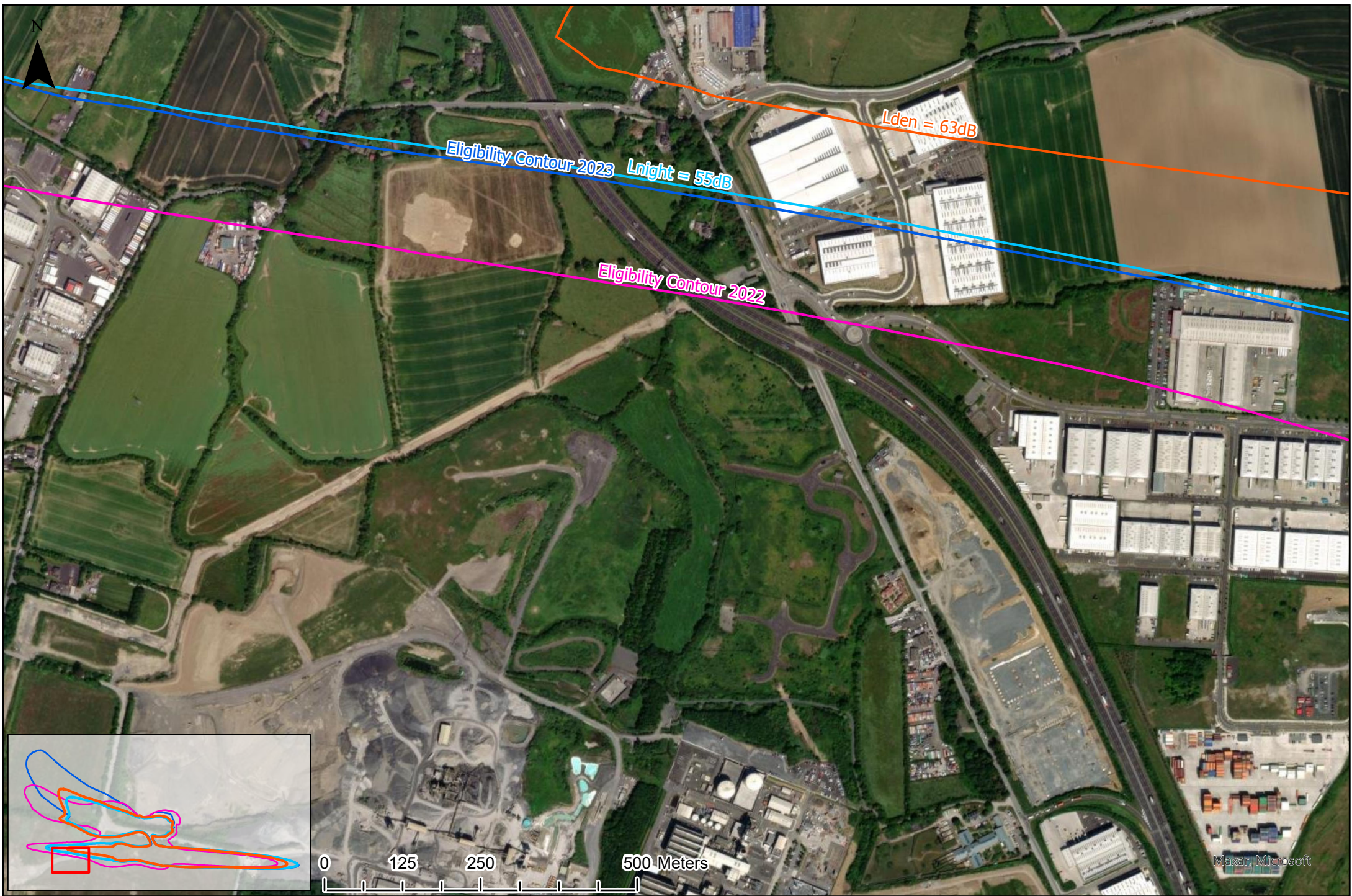
Comparison between Regulatory Decision 3rd Condition and F.I. Response
Including 55dB (Lnight) and 63 dB (Lden) contours



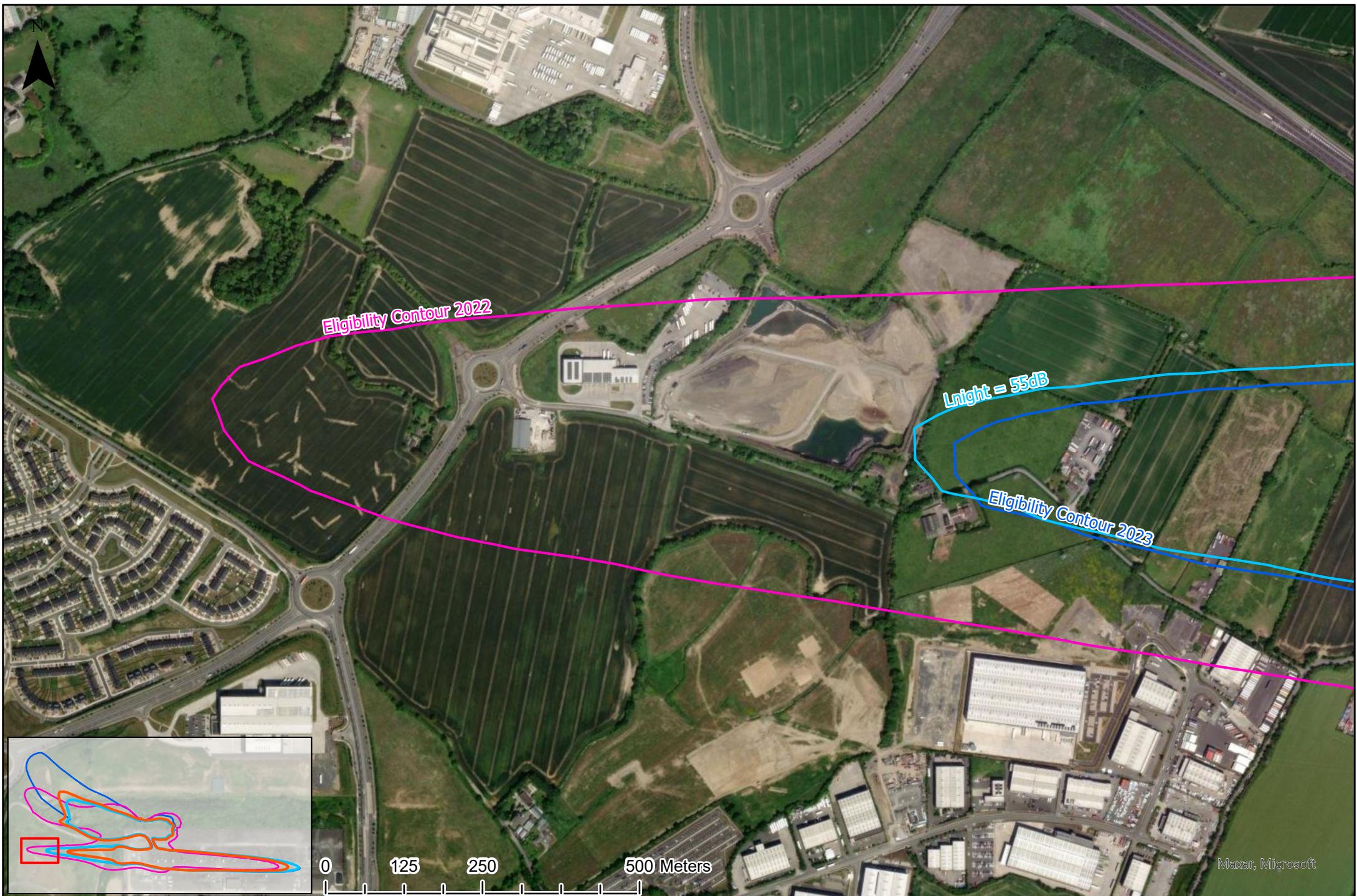
Comparison between Regulatory Decision 3rd Condition and F.I. Response
Including 55dB (Lnight) and 63 dB (Lden) contours



Comparison between Regulatory Decision 3rd Condition and F.I. Response
Including 55dB (Lnight) and 63 dB (Lden) contours



Comparison between Regulatory Decision 3rd Condition and F.I. Response
Including 55dB (Lnight) and 63 dB (Lden) contours



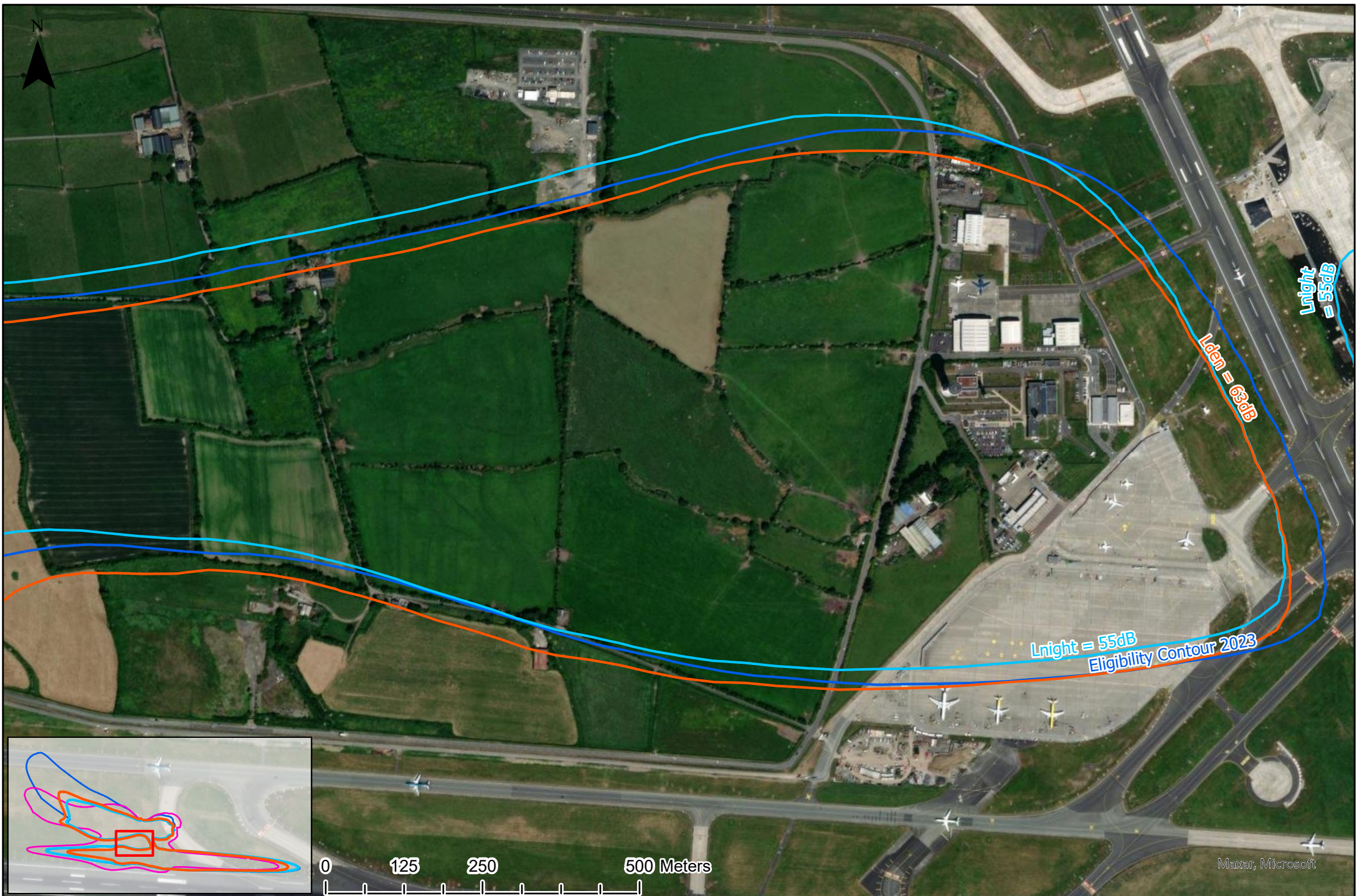
Comparison between Regulatory Decision 3rd Condition and F.I. Response
Including 55dB (Lnight) and 63 dB (Lden) contours



Comparison between Regulatory Decision 3rd Condition and F.I. Response
Including 55dB (Lnight) and 63 dB (Lden) contours



Comparison between Regulatory Decision 3rd Condition and F.I. Response
Including 55dB (Lnight) and 63 dB (Lden) contours



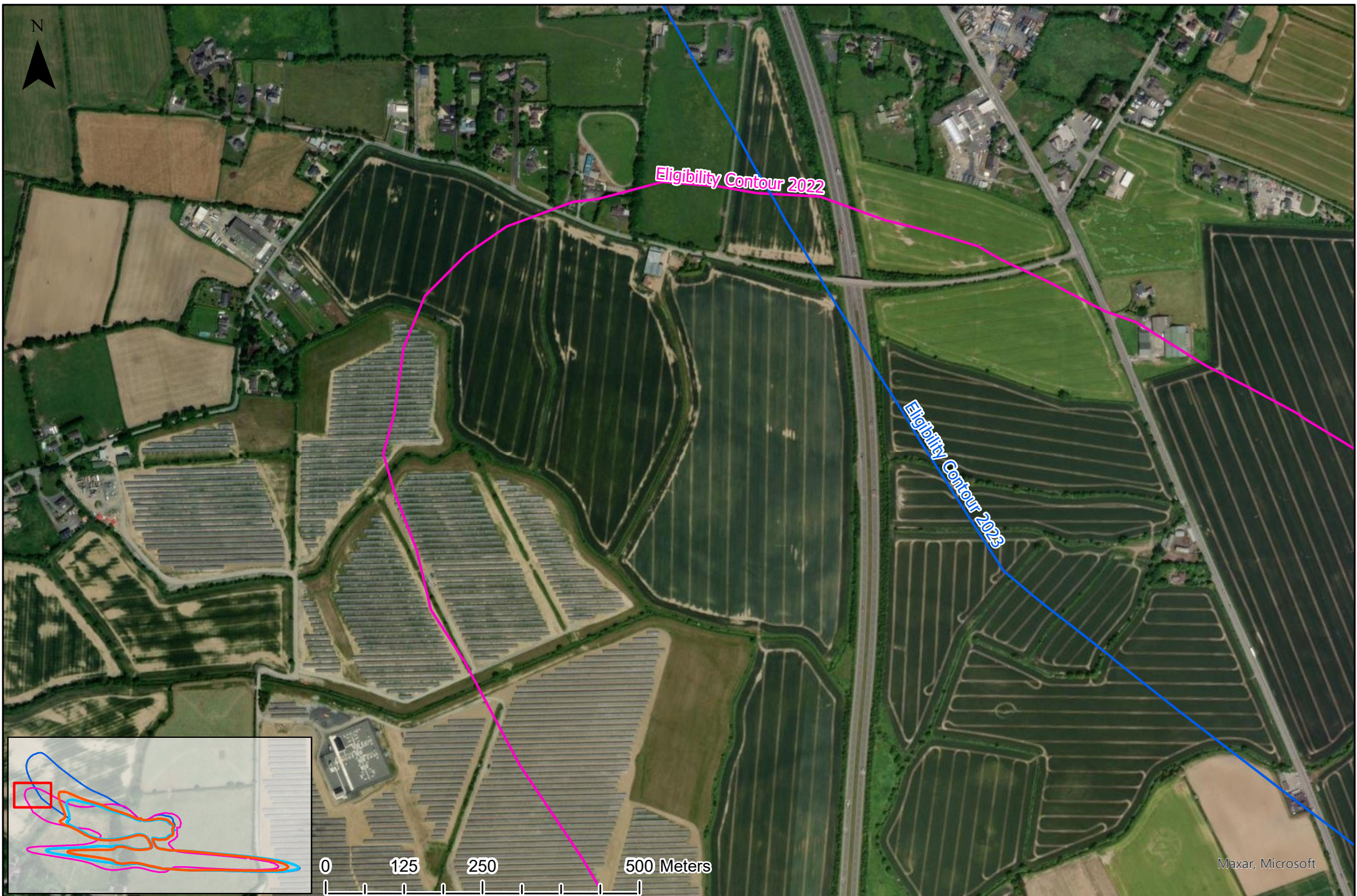
Comparison between Regulatory Decision 3rd Condition and F.I. Response
Including 55dB (Lnight) and 63 dB (Lden) contours



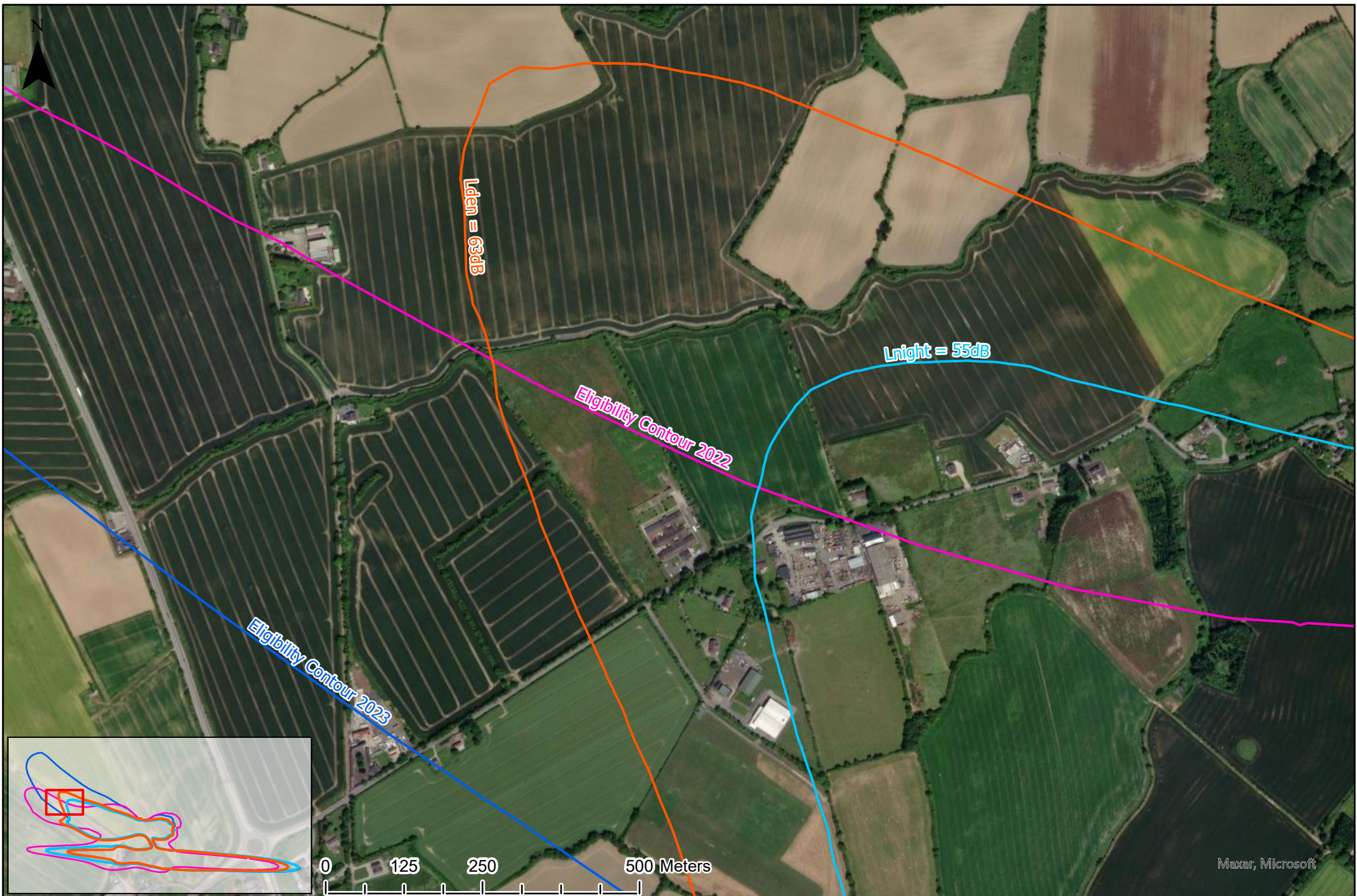
Comparison between Regulatory Decision 3rd Condition and F.I. Response
Including 55dB (Lnight) and 63 dB (Lden) contours



Comparison between Regulatory Decision 3rd Condition and F.I. Response
Including 55dB (Lnight) and 63 dB (Lden) contours



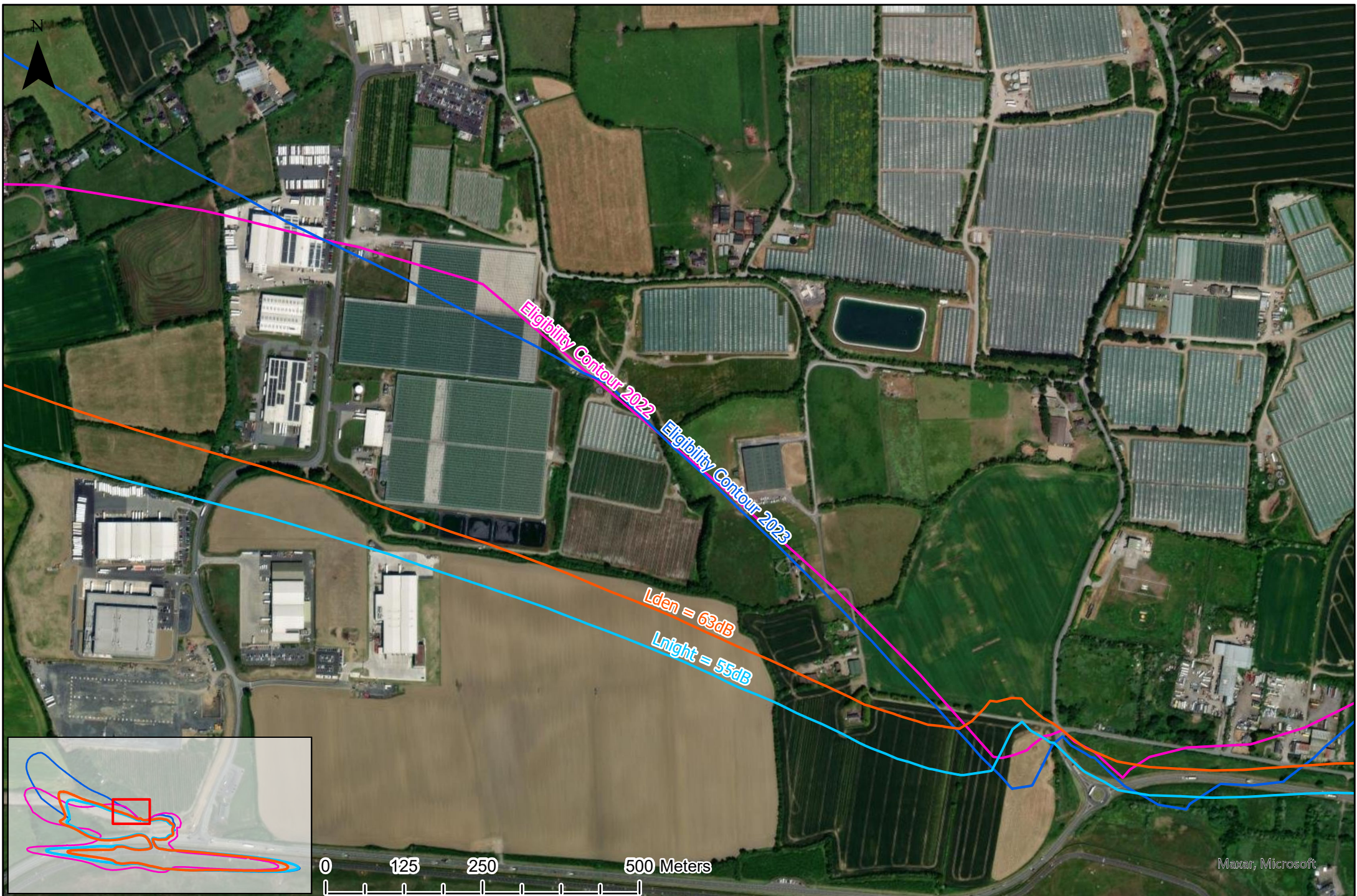
Comparison between Regulatory Decision 3rd Condition and F.I. Response
Including 55dB (Lnight) and 63 dB (Lden) contours



Comparison between Regulatory Decision 3rd Condition and F.I. Response
Including 55dB (Lnight) and 63 dB (Lden) contours



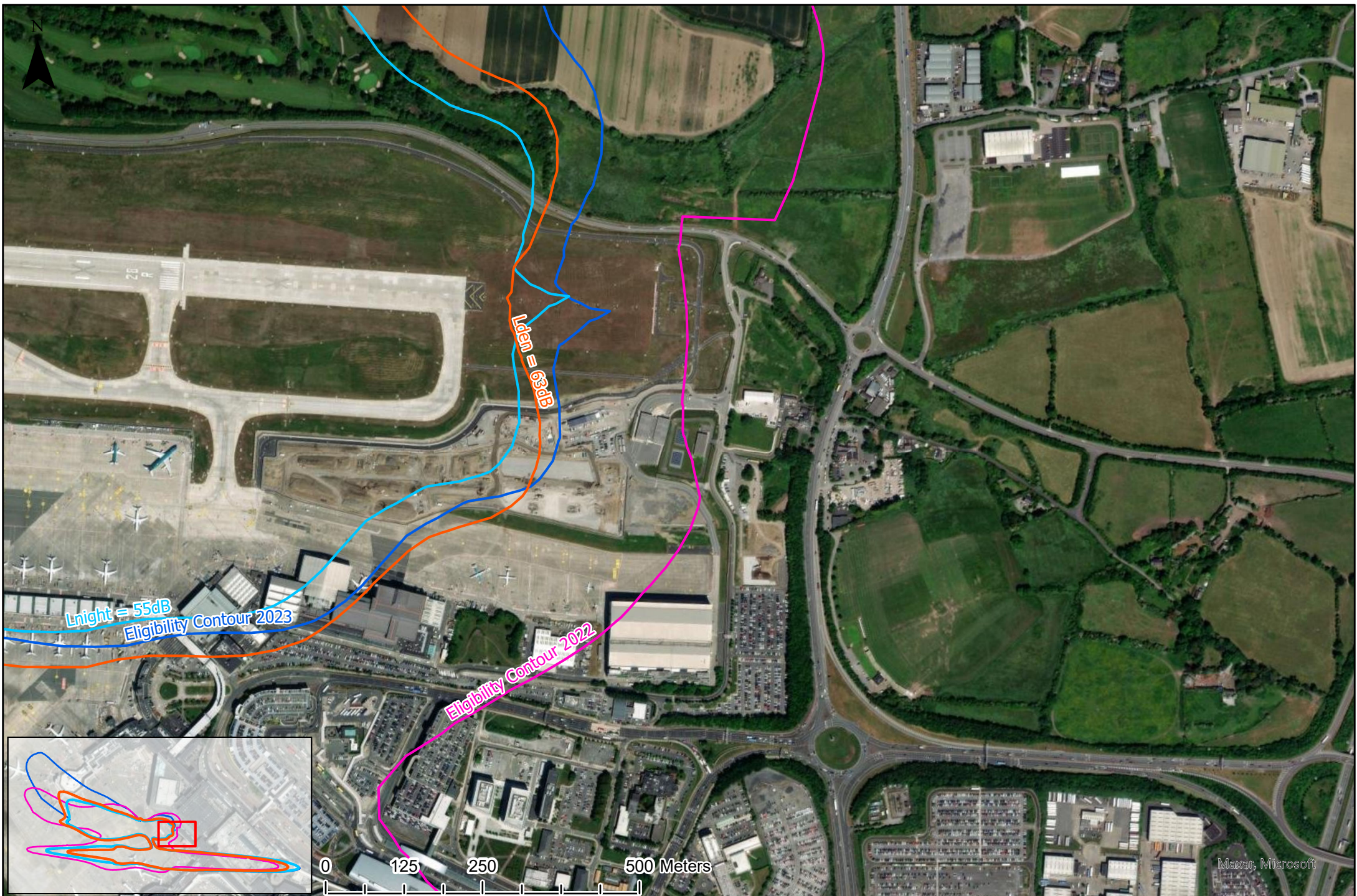
Comparison between Regulatory Decision 3rd Condition and F.I. Response
Including 55dB (Lnight) and 63 dB (Lden) contours



Comparison between Regulatory Decision 3rd Condition and F.I. Response
Including 55dB (Lnight) and 63 dB (Lden) contours



Comparison between Regulatory Decision 3rd Condition and F.I. Response
Including 55dB (Lnight) and 63 dB (Lden) contours



Comparison between Regulatory Decision 3rd Condition and F.I. Response
Including 55dB (Lnight) and 63 dB (Lden) contours



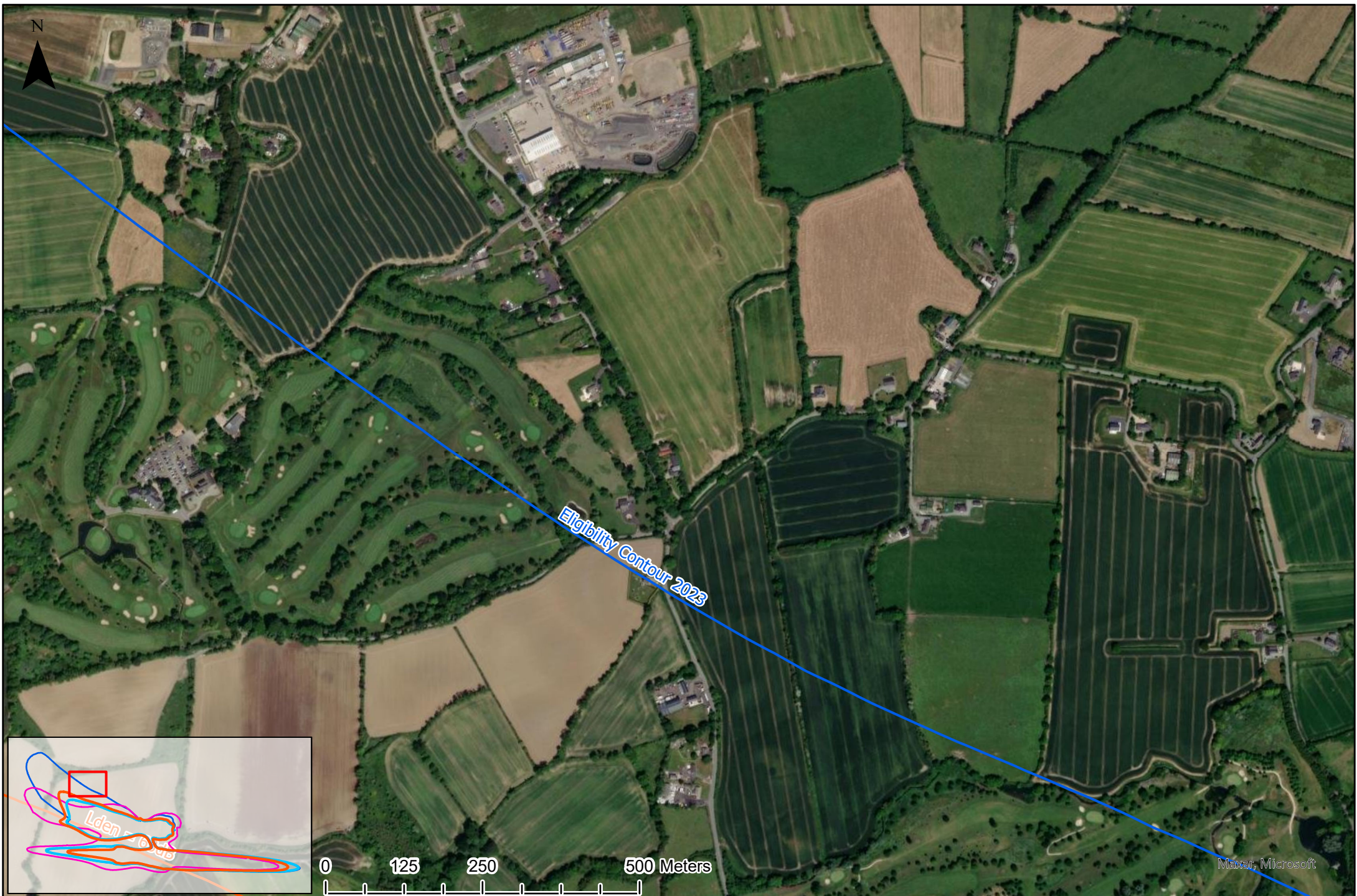
Comparison between Regulatory Decision 3rd Condition and F.I. Response
Including 55dB (Lnight) and 63 dB (Lden) contours



Comparison between Regulatory Decision 3rd Condition and F.I. Response
Including 55dB (Lnight) and 63 dB (Lden) contours



Comparison between Regulatory Decision 3rd Condition and F.I. Response
Including 55dB (Lnight) and 63 dB (Lden) contours



Comparison between Regulatory Decision 3rd Condition and F.I. Response
Including 55dB (Lnight) and 63 dB (Lden) contours